

Update:

Analysis Probe Information for Agilent 16715/16/17/18/19A Logic Analyzer Modules and Agilent 16700- Series Logic Analysis Systems

You *must* read this booklet if you plan to use your analysis probe with an Agilent 16715/16/17/18/19A logic analyzer module.

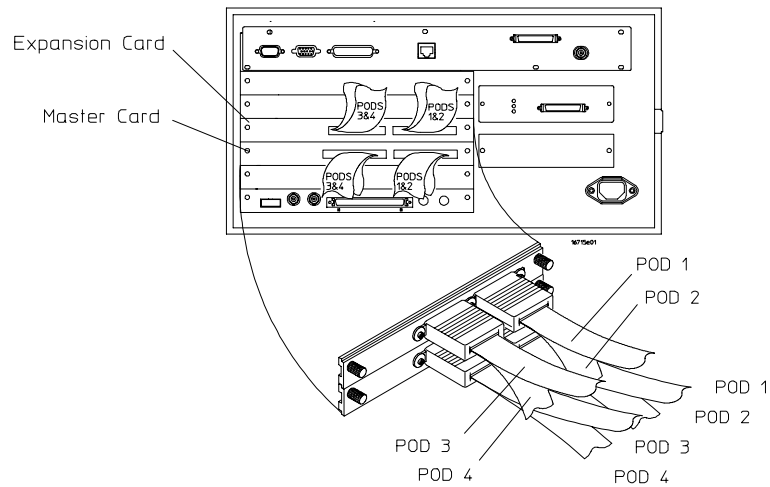
You *should* read this booklet if you are using an Agilent 16700-series logic analysis system with operating system version A.01.40.00 or higher.

This booklet provides information which is not included in your analysis probe or processor solution manual:

- How to connect an analysis probe to Agilent 16715/16/17/18/19A logic analyzer modules (page 2)
- VisiTrigger interface for Agilent 16715/16/17/18/19A logic analyzer modules (page 4)
- New setup window for all logic analyzer modules in Agilent 16700-series logic analysis systems (page 5)

How to connect an analysis probe to Agilent 16715/16/17/18/19A logic analyzer modules

How to connect an analysis probe to Agilent 16715/16/17/18/19A logic analyzer modules



Your analysis probe or processor solution manual does not include information about the pod connections nor about the names of the configuration files for Agilent 16715/16/17/18/19A logic analyzer modules.

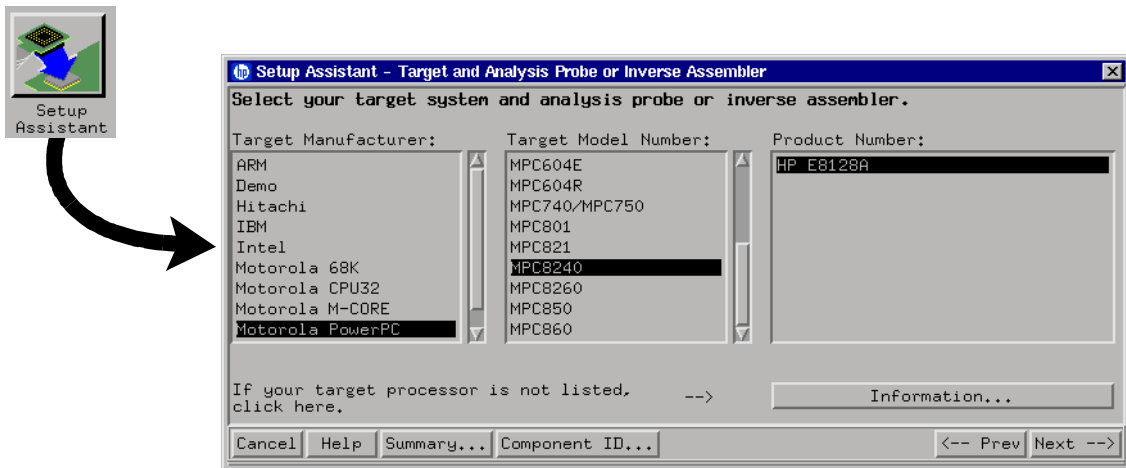
Instead, use the Setup Assistant to connect and configure your logic analyzer.

The Setup Assistant will:

- Tell you how to connect the logic analyzer pods to your analysis probe or built-in connectors.
- Load the correct configuration files into the logic analyzer.
- Help you set up the emulation module.

How to connect an analysis probe to Agilent 16715/16/17/18/19A logic analyzer modules

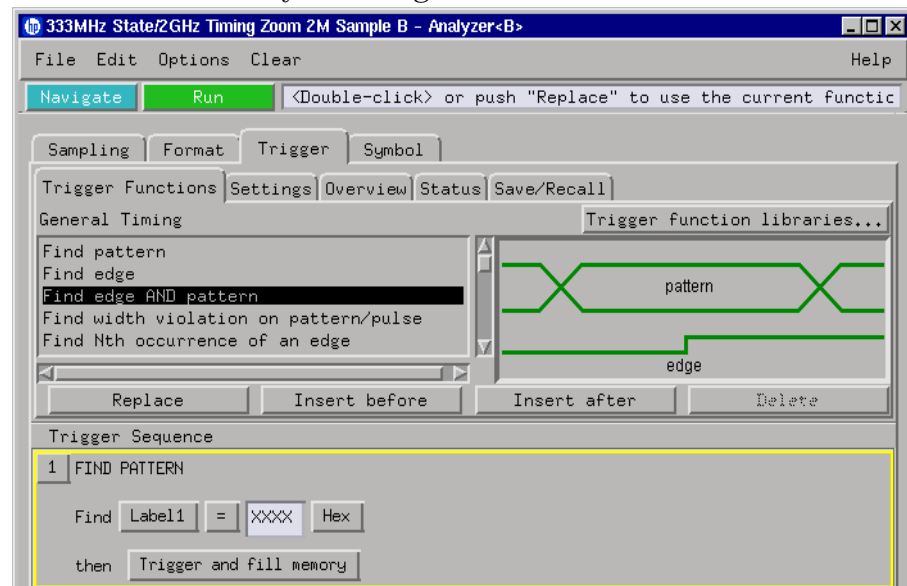
- 1 Attach the probing adapters and analysis probe to your target system, if necessary. See the instructions in your analysis probe or processor solution manual.
- 2 Turn on the logic analysis system, if it is not already on.
- 3 Install the processor support package for you target processor from the CD-ROM. See the instructions on the CD-ROM package or in your processor solution manual.
- 4 Click the Setup Assistant icon at the bottom of the main system window and follow the instructions.



VisiTrigger interface for Agilent 16715/16/17/18/19A logic analyzer modules

The Agilent 16715/16/17/18/19A logic analyzer modules have a new interface for creating triggers.

As a result, the triggering procedures in your analysis probe or solution manual may be changed.



See Also

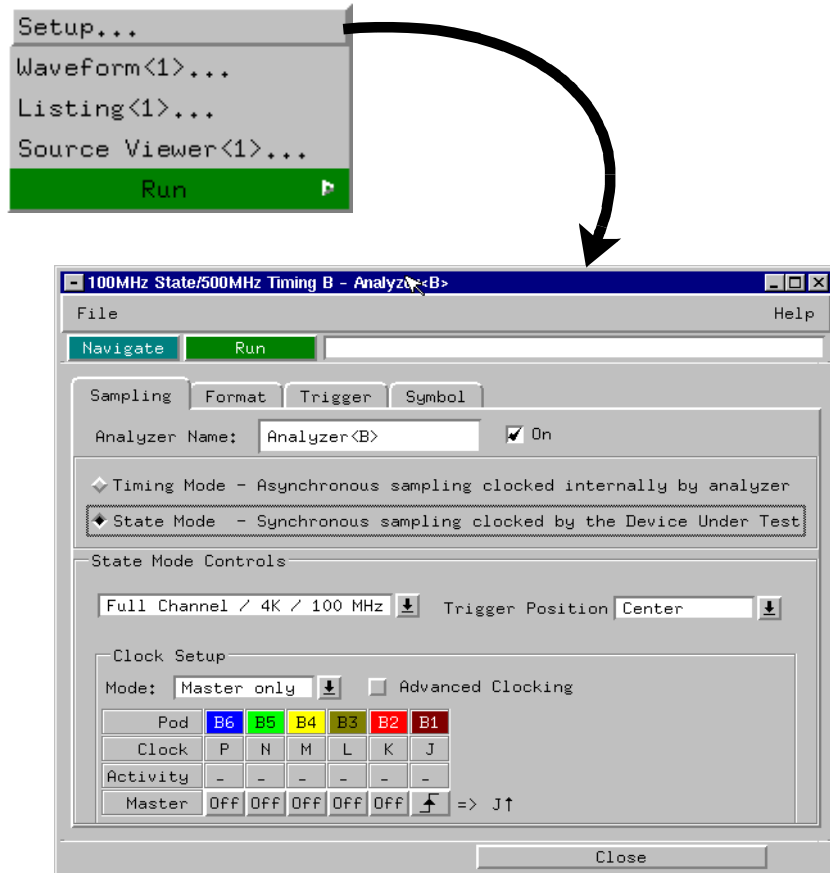
VisiTrigger Quick Start, supplied with your logic analyzer module.

Online help in the Setup window.

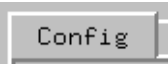
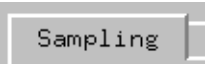
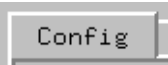
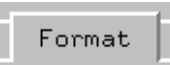

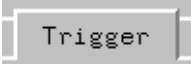
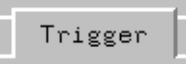

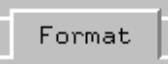

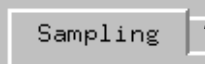
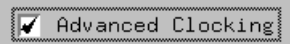

Measurement Examples under the system help in your logic analysis system.

New Setup window for all logic analyzer modules in Agilent 16700-series logic analysis systems

The Configuration, Format and Trigger tabs of the Setup window have changed beginning with Version A.01.40.00 of the logic analysis system software. As a result, a few of the procedures in your analysis probe or solution manual may be changed:



New Setup window for all logic analyzer modules in Agilent 16700-series logic analysis systems

Task	Before Version A.01.40.00	Version A.01.40.00
Select state or timing mode		
Assign analyzer pods to a machine		 
Set trigger position to Begin, Center, or End		 
Set up clock qualifiers	 	  

See Also

See the online help for more information on how to use the Setup window.